

Enclave

PORTAGE PARK



Unit A-2

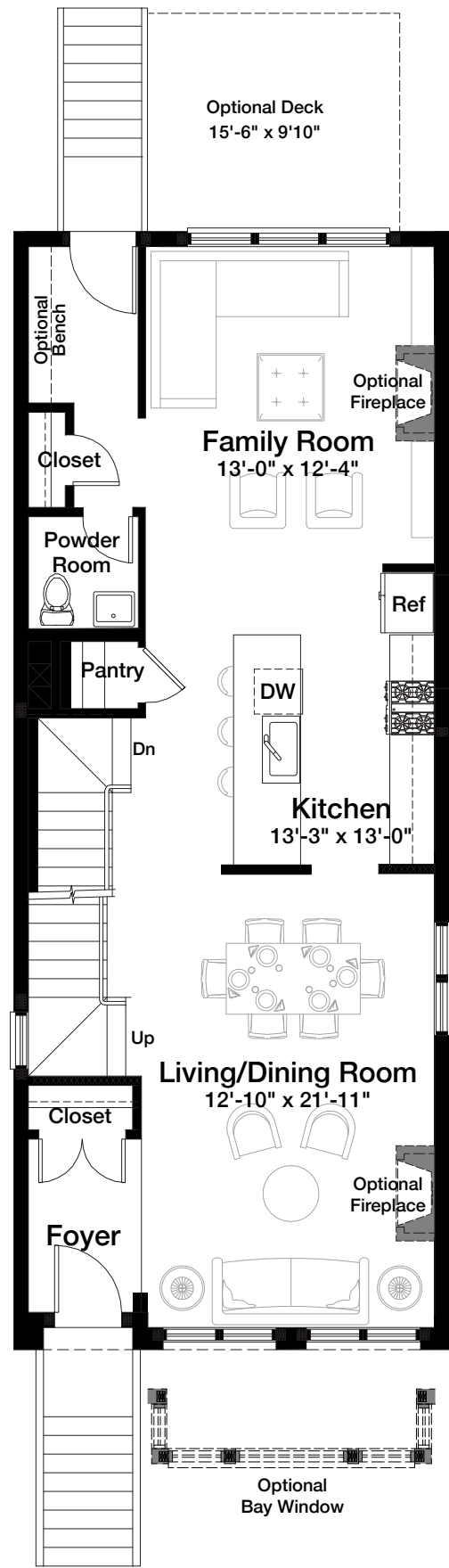
4 BEDROOM, 3 1/2 BATH

2,925 SQUARE FEET

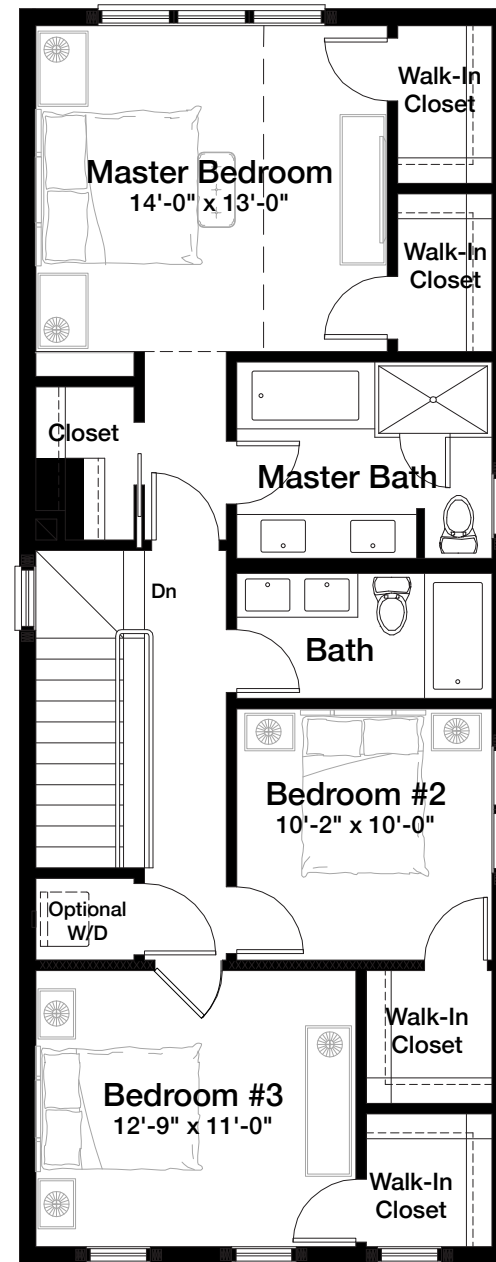
*SHOWN WITH OPTIONAL BAY

Unit A-2

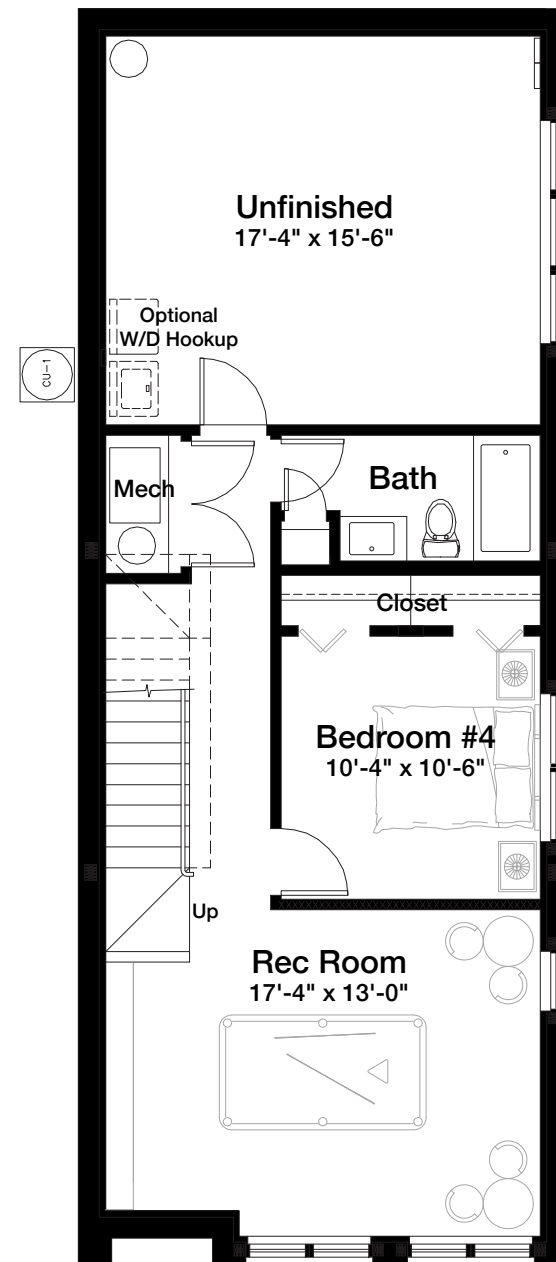
4 BEDROOM, 3 1/2 BATH
2,925 SQUARE FEET



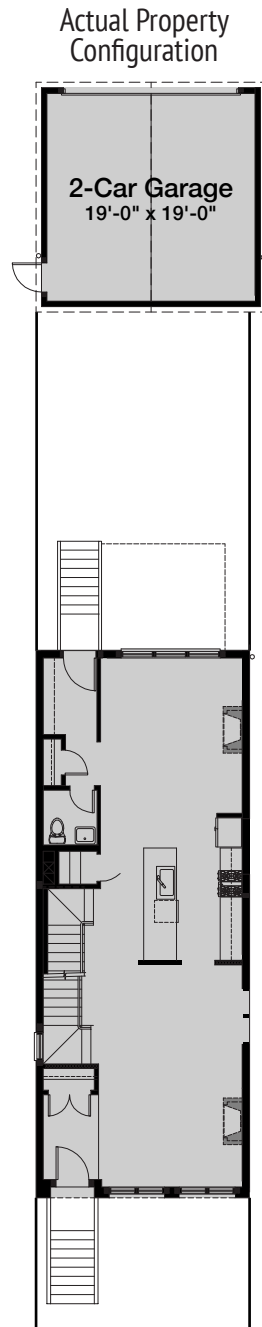
FIRST FLOOR



SECOND FLOOR



BASEMENT



Enclave's policy of continued attention to design and construction requires that all specific designs, specifications, features, amenities and materials are subject to change without notice. Topographic and site plan depictions are for conceptual purposes only based on current development plans, such depictions and development plans being subject to change without notice. Room dimensions are approximate and may vary depending on residence elected. Depicted floor plans, landscaping and exterior styling are only artist's interpretation and are subject to change without notice.

Luxury Features

INTERIOR

- 10 foot ceiling heights on living level
- 9 foot ceiling heights basement and upper floors
- Hardwood flooring on living level
- 12" x 24" porcelain tile in rear entry
- Walk-in closets in master bedroom
- Carpeting with padding on bedroom level
- Single panel solid core painted passage doors
- TV jacks in master bedroom, family room and basement rec room
- Telephone jack with Cat5 wiring in kitchen
- Schlage® satin chrome lever hardware
- Carbon monoxide detector—wired, with battery back-up
- Smoke detectors—wired, with battery back-up

EXTERIOR

- Detached two-car garage
- Professionally landscaped front yard
- Sodded rear yard
- Wood fencing between yards
- Schlage® satin chrome hardware
- Windows with removable screens
- Frost-proof hose bibs

KITCHEN

- Frigidaire® stainless steel appliances including:
 - Refrigerator with water line and icemaker
 - Self-cleaning oven/range with sealed burners
 - Dishwasher
 - Microwave/hood vented externally
- Hardwood flooring
- Quartz/granite countertops in a variety of colors
- European-style cabinets in a variety of colors
- Kohler® extra-deep stainless steel under-mount sink
- Grohe® faucet
- Recessed can lights

Enclave's policy of continued attention to design and construction requires that all specific designs, specifications, features, amenities and materials are subject to change without notice. Topographic and site plan depictions are for conceptual purposes only based on current development plans, such depictions and development plans being subject to change without notice. Room dimensions are approximate and may vary depending on residence selected. Depicted floor plans, landscaping and exterior styling are only artist's interpretation and are subject to change without notice.

MASTER BATH

- Quartz or granite vanity top in a variety of colors
- Soaking tub
- 12" x 24" porcelain floor tile in a variety of colors
- 12" x 24" porcelain floor tile and shower wall tile in a variety of colors
- Walk-in shower with frameless clear glass door
- Under-mount sinks
- Sterling® water closet
- Grohe® faucets
- Recessed can lighting

GUEST BATHS

- Quartz or granite vanity top in a variety of colors
- 12" x 24" porcelain tile flooring in a variety of colors
- 12" x 24" porcelain tile around tub in a variety of colors
- Under-mount sink
- Sterling® water closet
- Grohe® faucets
- Recessed can lighting

POWDER ROOM

- Kohler® pedestal sink
- Sterling® water closet
- Grohe® faucet
- Hardwood flooring
- Recessed can lighting

UTILITIES

- 13-SEER central air conditioning
- 92% energy-efficient furnace(s)
- 200-amp service
- Nest® digital programmable thermostat(s)
- 75-gallon quick-recovery water heater
- R-49 R value roof
- R-20 value exterior walls

Enclave
PORTAGE PARK